

FSH Stainless Steel Enclosure



Nobi FSH Stainless Steel enclosure range is a perfect solution for a need of large free standing enclosure with high protection category.

Capable to provide protection for systems incorporating large components in highly corrosive environments. The enclosure is typically used for outdoor in food processing plants, pharmaceutical manufacturing facilities, petrochemical plants, and wastewater treatment facilities.

Material :
SUS 304 or SUS 316L 20mm thickness for Body, Door, and Zinc Plated Steel 3.0mm thickness for Mounting Plate

Gasket :
Continuous Polyurethane.

Lock System :
L-Handle and Clamping

Surface Finish :
Natural, brushed finish

Protection Category :

- IP 66 to EN 60529 and IEC 529
- NEMA 4X

Supply Include :

Enclosure of solid construction no holes or knockouts, a pair of punch section D, single door, with Clamping, foamed in place gasket, mounting plate, and 100H Plinth.

Possible Design :

Cut out at any position.

Available Accessories :

200H Plinth, Door Stay, Punch Section H and W, Drawing Pocket, Viewing Window, 19" Frame (for 600W minimum).

Note :

For information about modifications and additional accessories please contact our Sales Engineer.

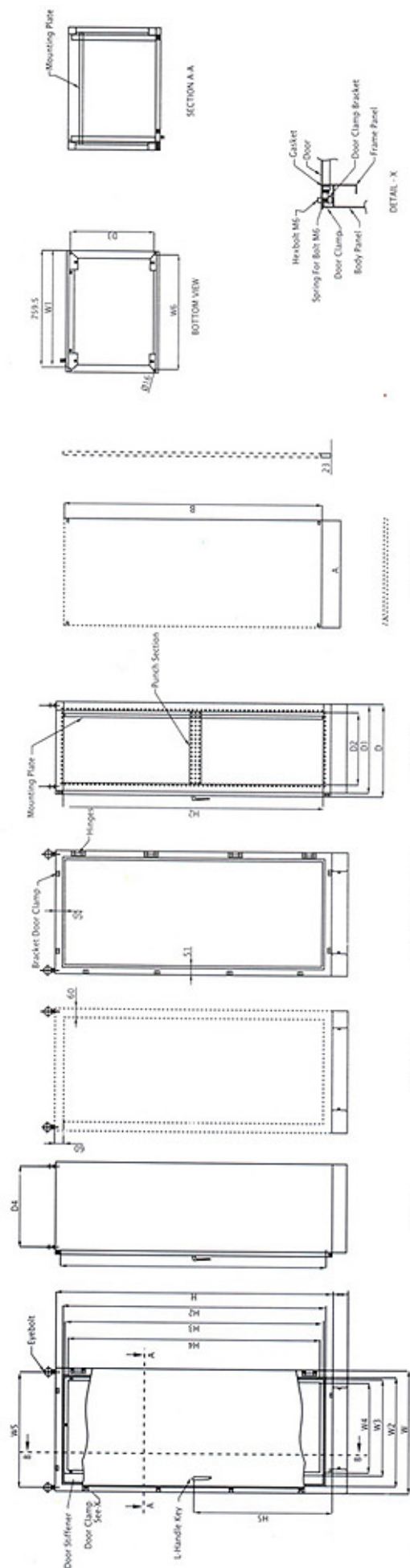
FSH

stainless steel enclosure

FSH Stainless Steel Enclosure

Design Outline

FSH Stainless Steel



Code (S/G)	Width Measurement					Height Measurement					Depth Measurement					Mounting Plint Dimension			Notes		
	W	W1	W2	W3	W4	W5	H	H1	H2	H3	H4	H5	D	D1	D2	D3	D4	A		B	E
FSH 4808	800	759.5	700	623	583	750	2000	1925	1900	1870	1830	1000	800	775	666	745	725	688	1884.4	100 & 200	Single Door, 4 Hinges, 1 Key
FSH 4888	800	759.5	700	623	583	750	1800	1725	1700	1670	1630	900	800	775	666	745	525	688	1684.4		
FSH 4806	800	759.5	700	623	583	750	2000	1925	1900	1870	1830	1000	600	575	466	545	525	688	1884.4		
FSH 4886	800	759.5	700	623	583	750	1800	1725	1700	1670	1630	900	600	575	466	545	525	688	1884.4		
FSH 4606	600	559.5	500	423	383	550	2000	1925	1900	1870	1830	1000	600	575	466	545	525	488	1884.4		
FSH 4686	600	559.5	500	423	383	550	1800	1725	1700	1670	1630	900	600	575	466	545	525	488	1684.4		

Remarks :

- W : Overall Width
- W1 : Width Of door
- W2 : Clearance Between the Enclosure Frame Part
- W3 : Clearance Between Outside The Tubular Door Frame
- W4 : Clearance Between Inside The Tubular Door Frame
- W5 : Centre Distance Of Lifting Eyebolt
- W6 : Centre Distance Of Anchor Holes
- H : Overall Height
- H1 : Height Of Door
- H2 : Clearance Between the Enclosure Frame Part
- H3 : Clearance Between Outside The Tubular Door Frame
- H4 : Clearance Between Inside The Tubular Door Frame
- H5 : Distance From Base To Centre Of Lock
- D : Overall Depth
- D1 : Depth Of Plinth
- D2 : Clearance Between The Enclosure Frame Part
- D3 : Centre Distance Of Anchor Holes
- D4 : Centre Distance Of Lifting Eyebolt
- S : SUS 304
- G : SUS 316